



SOCIAL ENTERPRISE IN THE UK

And English Health Policy

George Leahy
Director of Research & Policy

PURPOSE

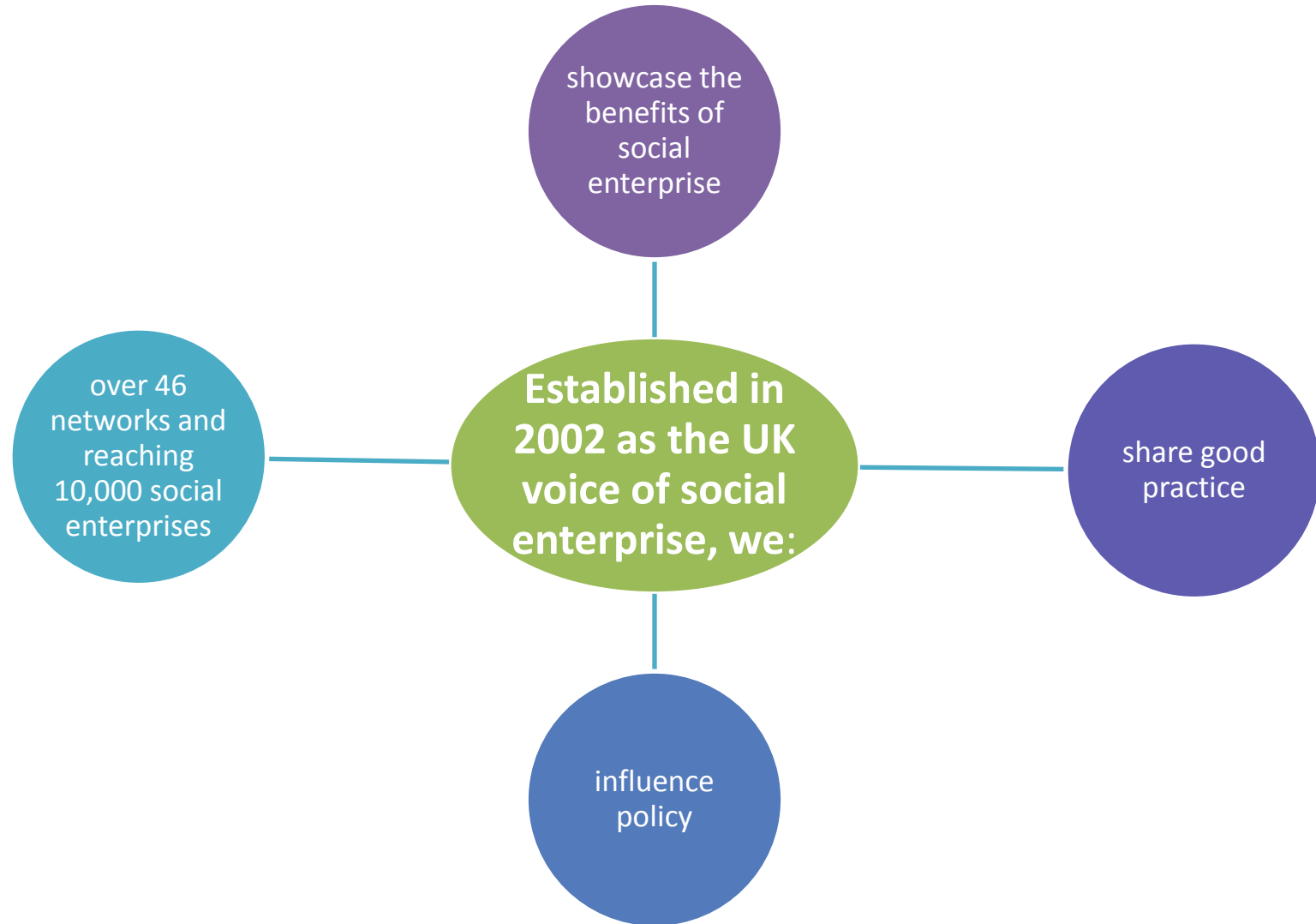
What is the 'Coalition'

- Social enterprise in the UK

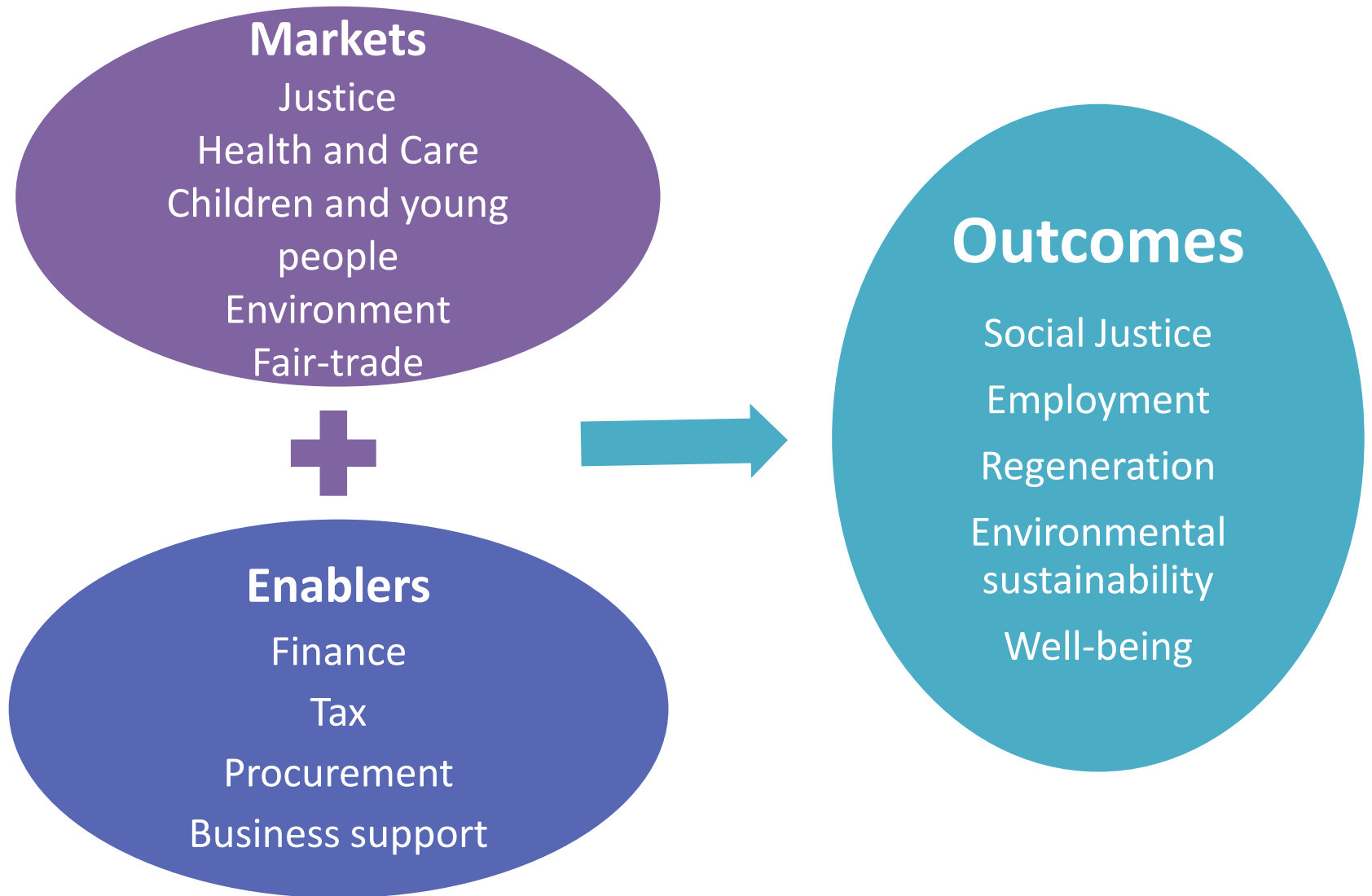
UK health policy

- Social enterprise and health outcomes

THE COALITION



WHAT WE WORK ON



Social Enterprise

- *A social enterprise is a **business***
- *with **primarily** social & environmental objectives*
- *whose surpluses are principally **reinvested** for that purpose*
- *in the business or in the **community***
- ***rather than** being driven by the need to maximise profit for **shareholders** and owners.*
- they are some of the best businesses in UK
- Found in most industrial sectors
- But deliver on 'public interest' outcomes
- As well as delivering publicly funded services

WHAT DO WE KNOW?

Industrial Spread

- Phone Co-op
- Women Like Us
- Divine Chocolate
- ONE Water
- Baywind

Organisational Form

- Co-Operatives
- Social Firms
- Community Interest Companies
- Companies Limited by Guarantee
- Employee-owned

Stats

- Estimated 55,000 enterprises in UK
- Coalition: 8-10,000 members

UK HEALTH POLICY

4 'natural' experiments

Devolution has created
4 different health
systems

- England, Northern Ireland,
Scotland, Wales

But all still 'free at the
point of use'

England has a
programme of (health)
'system reform'

HEALTH POLICY & SYSTEM REFORM

Focus on
commissioning and
contracting

- Commissioning will be the driver

Care closer to home –
moving as much
activity out of hospital
as possible

Community-based
organisations to deliver
health & social care

- NHS and non-NHS

Hospitals
'independent' and
compete for 'activity'

'THE MARKET'

Policy is aimed at creating diversity and plurality of providers in the care market

- World Class Commissioning
- A competency based organisational improvement programme

Case for this: it will make the NHS more efficient

- Public finance for healthcare is more effective

And deliver improved outcomes

- Improve Public Health
- and reduce inequalities
- as well as better patient experience

The Darzi Review

Lord Darzi

- Surgeon and health minister

NHS Next Stage Review

- Analysis of barriers and enablers
- To make NHS more successful

NHS Constitution

- Right to choose treatment
- Right to choose provider

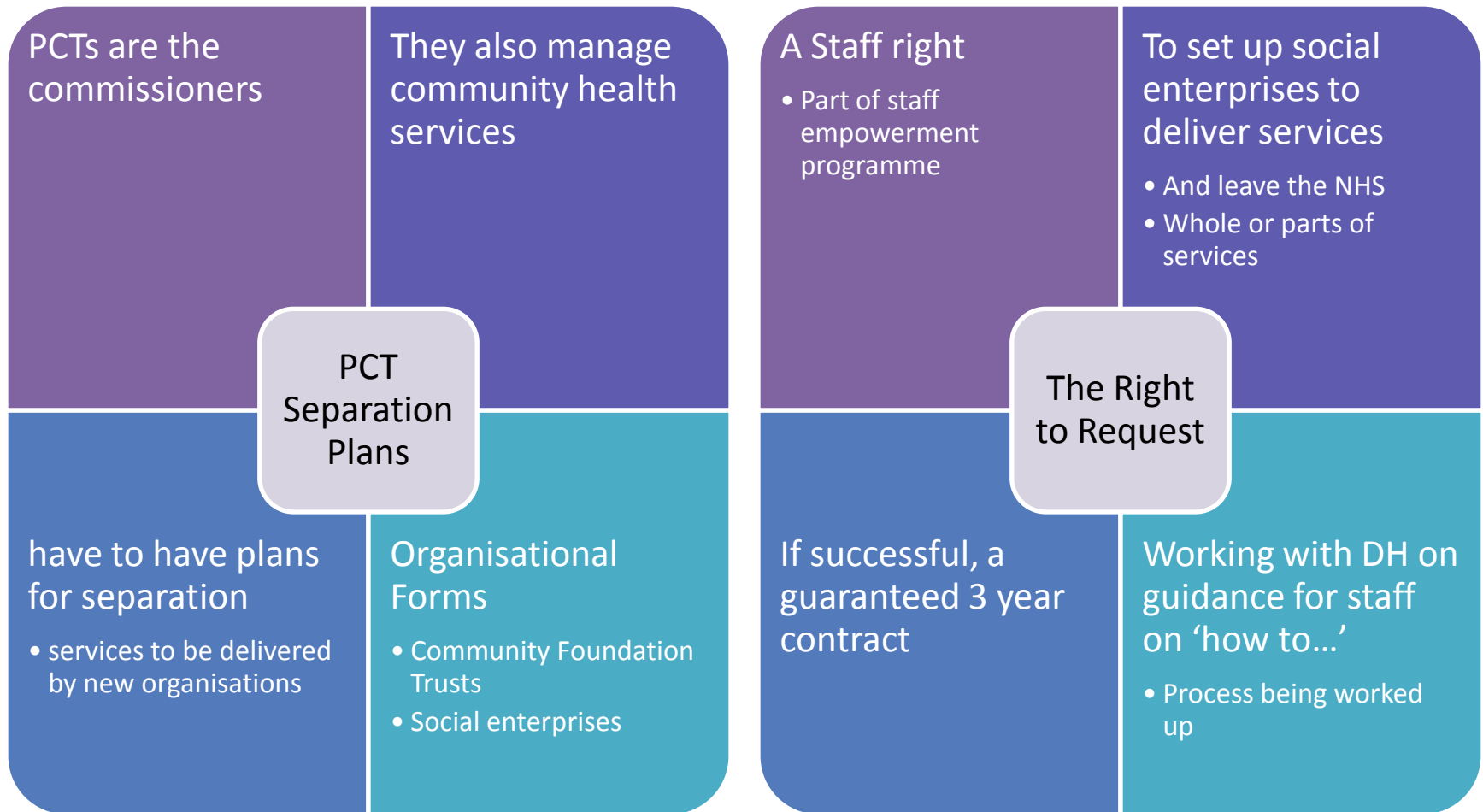
Includes 'Right to Request'



Pic: Rex Features

'EXTERNALISATION'

Two Routes To Social Enterprise



SOCIAL ENTERPRISE & PUBLIC HEALTH

Directly
delivering Public
Health products

- Health Visiting (under 5s)
- Smoking cessation
- Obesity
- Drug and alcohol treatment
- Sexual health services

Indirectly by
delivering (non-
health & social
care) services

- that contribute to improvements in Public Health
- Measuring health related QoL change
- As well as social value gained
 - SROI
 - Social Auditing

EXAMPLES

Central Surrey
Health

Ex NHS

Owned by employees

Company limited by
shares



Deliver community
health services

Health visiting

District nursing

physiotherapy

EXAMPLES

Sandwell Community Caring Trust

Home care services

Employee-owned

Top 100 best employer in UK

Absence rate 0.3%

Turning Point

Drug and alcohol treatment

Successful transition

From voluntary sector

To enterprise model

Secure Health

Delivering prison health services

Inc prisoners in decision-making

SUMMARY

Social enterprise in the UK

- can deliver social benefits
- and make profits

Health policy in England

- is introducing a more market based approach
- as a way of making health services more responsive and more effective

Social enterprise is

- a means of delivering plurality of provision
- Whilst retaining a public service sensibility

The 'non-State public organisation'