



# RISK SCIENCE CENTER

## Health and Communication

[www.umriskcenter.org](http://www.umriskcenter.org)

March 2008

First Risk Science  
Fellowships Awarded

Associate Director Jolliet  
Chairs Session  
Water: Health + the  
Environment

Risk Science Master of  
Public Health Degree

Visiting Scientist,  
Elisabete Salay

News Bites

## First Risk Science Fellowships Awarded

**Thanks to the generous support** of donors Steven and Susan Bloom, Charles and Rita Gelman, and Gordon and Sharon Hassing, the University of Michigan Risk Science Center (UMRSC) held its first fellowship competition. This annual competition provides summer stipend support for students from the School of Public



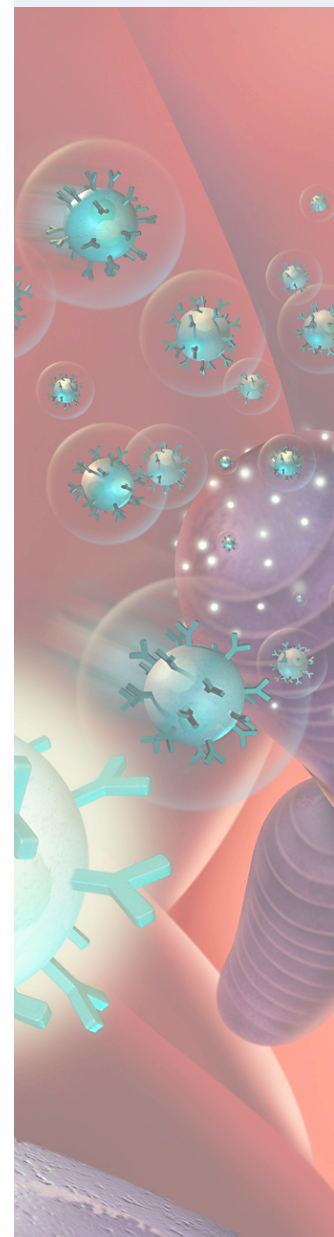
Health (SPH). UMRSC fellowships enhance education and training in the environmental risk sciences and prepare public health students to pursue careers in the field of risk analysis. This year's awards go to Ph.D. students in Environmental Health Sciences: Jaclyn Gaydos and Rosaicela Román Gómez. Ms. Gómez (*photo right*) is supervised by Professor Craig Harris and will be working on the project entitled: ***Redox Profile Alteration in Rat Conceptus as a Marker of Toxic Exposure.*** Ms.

Gaydos (*photo left*) will be co-supervised by Assistant Professor Niladri Basu and Professor Alfred Franzblau while studying ***The Influence of Genetic Polymorphisms on Mercury Neurotoxicity in the American Dental Association Cohort.***

## Associate Director Jolliet Chairs Session Water: Health + the Environment

**The Graham Environmental Sustainability Institute** sponsored the Water: Health + the Environment conference on March 26 and 27 to identify research needs and opportunities in support of regional, national, international, and global issues concerning water, human health, and the environment. UMRSC Associate Director and SPH Associate Professor Olivier Jolliet chaired the session on the ***Spread of Antibiotic Resistance in Water Environments and Impacts on Human Health.***

Speakers included representatives from the College of Engineering, Department of Civil and Environmental Engineering; the School of Public Health, Departments of Epidemiology and Environmental Health Sciences; the College of Literature, Science and the Art, Departments of Economics and Mathematics; and the Ford School of Public Policy. This interdisciplinary team seeks to identify and understand the factors causing the emergence, environmental transmission, and maintenance of antibiotic resistance as an imperative for policy development that will effectively protect human health. A feature paper establishing the research agenda and identifying the critical issues will be submitted at the conclusion of the conference.





## Risk Science Master of Public Health Degree

**Student recruitment has begun.** The Environmental Health Sciences MPH degree with specialization in risk science will be offered in the fall of 2008. The risk science graduate will be able to assess environmental and occupational risks using the best available risk assessment tools. Specific risk courses include EHS 572 Environmental Impact Assessment, EHS 671 Life Cycle Assessment: Human Health and Environmental Impacts, and NRE 595 Risk Benefit Analysis in Environmental Engineering. Please visit our website at <http://www.sph.umich.edu/riskcenter/training/MSPHflyer.pdf> to download the program flyer or contact Olivier Jolliet at [ojolliet@umich.edu](mailto:ojolliet@umich.edu) for program information. To learn more about the MPH application process, go to <http://www.sph.umich.edu/students/prospective/>.

## Visiting Scientist, Elisabete Salay

**Dr. Elisabete Salay**, visiting scholar from Universidade Estadual de Campinas, Brasil FEA/UNICAMP joined the UMRSC in August 2007 to work on the Michigan Fish Advisory Project. Support for Dr. Salay is provided by a fellowship from the



Coordenação de Aperfeiçoamento de Pessoal de Ensino Superior administered by the Brazilian Department of Education. She has just completed a comprehensive literature survey that analyzed the ways that available epidemiological evidence on PCBs' impact on thyroid function in adults can contribute to risk assessment. At present, a probabilistic model for simultaneous exposure, using data provided by Michigan's Department for Environmental Quality, is being elaborated in order

to balance the risks and benefits of fish consumption in the state of Michigan. Dr. Salay has been collaborating with Emeritus Director and SPH Emeritus Professor David Garabrant to complete these studies and will be staying through July 2008.

## News Bites

RECENT PUBLICATION from the lab of Executive Director, SPH Professor Martin Philbert. "Encapsulation of methylene blue in polyacrylamide nanoparticle platforms protects its photodynamic effectiveness." Tang W, Xu H, Park EJ, Philbert MA, Kopelman R. *Biochem Biophys Res Commun.* 2008 Feb 25; [Epub ahead of print].

SAVE THE DATE! The next Bernstein Symposium is scheduled for May 6 and 7, 2009 on the University of Michigan campus and will be on the topic of Air Toxics. The UMRSC is coordinating this event in conjunction with the Mickey Leland National Urban Air Toxics Research Center.

