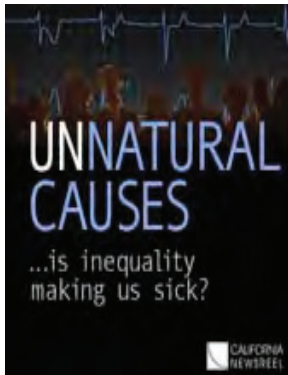


University of Michigan School of Public Health

M **SPH** **Public Health Film Series**

Explore public health topics through film. Informal discussions to follow.

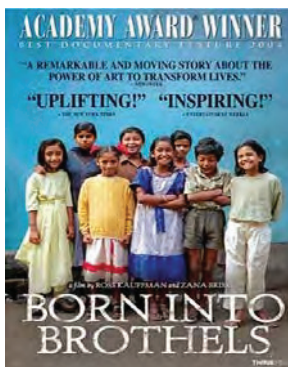


November 14, 2011: 5-8pm
SPH II Auditorium

Unnatural Causes: Is inequality making us sick? (2008)

The documentary series crisscrosses the nation uncovering startling new findings that suggest there is much more to our health than bad habits, health care, or unlucky genes. The social circumstances in which we are born, live, and work can actually get under our skin and disrupt our physiology as much as germs and viruses.

Sponsored by the Office of Public Health Practice, Program for Multicultural Health and the Prevention Research Center of Michigan



January 9, 2012: 5-8pm
SPH II Auditorium

Born into Brothels (2004)

"A tribute to the resiliency of childhood and the restorative power of art, BORN INTO BROTHELS is a portrait of several unforgettable children who live in Calcutta's red light district, where their mothers work as prostitutes."

Sponsored by the Office of Public Health Practice, Program for Multicultural Health, and Office of Academic Affairs

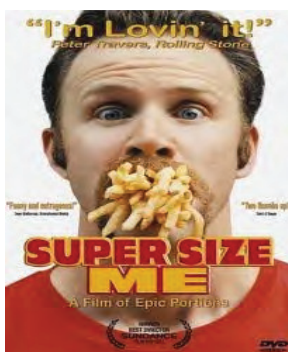


March 12, 2012: 5-8pm
SPH II Auditorium

And the Band Played On (1993)

A made-for-cable film, this HBO adaptation of Randy Shilts's book chronicles the emergence of HIV/AIDS in America and the fight against bureaucracy and society for a cure.

Sponsored by the Office of Public Health Practice, Program for Multicultural Health and the Sexuality + Health Lab



April 9, 2012: 5-8pm
SPH II Auditorium

Supersize Me (2004)

Documentary filmmaker Morgan Spurlock puts his health on the line in this examination of the food industry. The biggest part of his journey includes embracing a diet of McDonald's fast food everyday for one month.

Sponsored by the Office of Public Health Practice, Program for Multicultural Health and the Center for Managing Chronic Disease